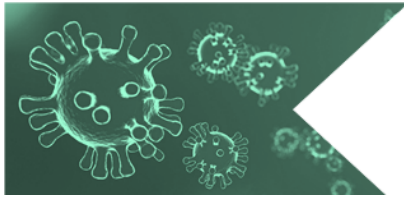


✉ Share this with those who need to know



SAMED COVID-19 NEWS

south african medical technology industry association

COVID-19 news from SAMED, Government and Abroad.

INDEX:

1. [SAMED on COVID-19](#)
 - 1.1. [SAMED library](#)
 - 1.2. [COVID-19 products and company information portal](#)
 - 1.3. [SAMED FAQ](#)
 - 1.3.1. [FAQs on Essential Goods, clearance and movement of goods and service](#)
 - 1.3.2. [FAQs on Employees' Tax, ETI and Provisional Tax](#)
2. [COVID-19 Updates, Notices, Legislation & Regulations](#)
 - 2.1. [COVID-19: Level 4](#)
 - 2.2. [SAMED submission on Annexure B of the Disaster Management Act](#)
 - 2.3. [COVID-19: Opportunity for local manufacture](#)
 - 2.4. [SAHPRA medical device hotline](#)
 - 2.5. [Reopening the economy: Obstacles, opportunities and risks](#)
 - 2.6. [Locally made face-mask marketplace](#)
 - 2.7. [BSA Update: SA Receives significant PPE supply](#)
 - 2.8. [The solidarity fund](#)
3. [COVID-19 Related Product Requests](#)
 - 3.1. [Request for Infrared digital thermometer](#)
4. [COVID-19 Events](#)
 - 4.1. [BSA Update: Risk assessment presentation](#)
5. [COVID-19 Developments](#)

SAMED ON COVID-19

The [SAMED Library](#) is a dedicated resource for all COVID-19 related updates, regulations, notices and news. All SAMED COVID-19 updates and related information can be found [here](#).

PLEASE PARTICIPATE: COVID-19 products and company information portal.

We are aware of the constant requests by many sources for different information in different formats re COVID-19. SAMED being one of the 'asker's'. And that this is frustrating and time-consuming.

SAMED has worked hard over the last few days to create a live, online, safe and secure portal where the industry can submit their information regarding COVID-19 required products. (Note our previous excel sheets are no longer required). This effort is part of the broader SAMED collaboration with the Minister of Health via Business Unity South Africa's "Business for South Africa" initiative (BSA). During the current pandemic, up-to-date information is critical to ensure all key stakeholders in the value chain make the best-informed decisions at the right time.

The information collected on the covid19manager.co.za platform will be used to ensure supplier verification, regulatory compliance, product availability, reasonable pricing and providing the accurate and most up-to-date logistical information to the procurement department division at BSA to place orders from you and/or assist with ramping up local production. It is an automated process to help facilitate the overwhelming demand currently being experienced in South Africa during the weeks to come. The IDC, the dti, Minister of Health and the BSA procurement team will have access to the data. No data will be shared with other suppliers. SAMED will report to the Minister on the aggregated data.

We are aware that it is extremely difficult for you to secure overseas supply without a confirmed

[Subscribe](#)[Past Issues](#)[Translate ▼](#)

We have the blessing from the Minister to procure locally first and via trusted credible suppliers. We understand that you may have existing orders in the pipeline promised for other customers, however, we urge you to consider diverting as much as you can now and going forward to this portal. If we unite and work together we can make a difference.

NOTE: THIS IS A LIVE SYSTEM SO PLEASE UPDATE YOUR STOCK QUANTITIES AND LEAD TIME AS AND WHEN THEY CHANGE.

Please see the following [link to the video](#) for an explanation of how to use the portal and click on <https://covid19manager.co.za/> to add your company and product information.

You will most likely be contacted by a member of the BSA procurement team should your information provided need to be verified or an order need to be placed. In this regard, we have put in place a security measure. The BSA procurement team will always supply you with your security code that only you have access to on the portal. See the video for reference as to where to find this code. Please never share or read this code to anyone but only have them read it back to you for validation. If at any point you feel your security code is compromised please let Tanya Vogt (tanya@samed.org.za) know and it will reset.

We are extremely appreciative of the support and commitment of our members in fighting this pandemic.
[Back to top](#)

DO YOU HAVE A COVID-19 QUESTION OR QUERY?

Please visit the [FAQ Section](#) of our library as it provides answers to many of the frequently asked questions we receive.

Frequently Asked Questions (FAQs) relating to Essential Goods, clearance and movement of goods and service rendered by customs under the COVID-19 lockdown

- What is the difference between critical supplies and essential goods?
- What do we need to know about the importation of critical supplies or essential goods to the national state of disaster (COVID-19 pandemic)?
- Do I need to apply for the VAT exemption under rebate item 412.11?
- Where can I find the certificate issued in terms of Schedule 1(8) of the Value Added Tax Act, 1991, item 412.11/00.00/01.00 (RE: SARS Essential Goods List)?

Find the answer to these and other questions [here](#).

Disaster Management Tax Relief FAQ's for Employees' Tax, ETI and Provisional Tax

- Who are qualifying taxpayers?
- What are the requirements to claim the tax relief?
- What is the Employment Tax Incentive (ETI) tax relief?
- What is the Employees' Tax Deferral?

Find the answer to these and other questions [here](#).

COVID-19 UPDATES, NOTICES, LEGISLATION AND REGULATIONS

COVID-19: Level 4

There was an opportunity to comment on the schedule of services to be phased in as per the COVID-19 risk adjustment strategy. Some points to note below:

- For **HCPs**, and health facilities, the main concern remains that although the list refers to "Medical- and Veterinary Services" that would still be limited by regulation 11A and the definition of

[Subscribe](#)[Past Issues](#)[Translate ▼](#)

general criteria on physical distancing, the duties of practices to ensure staff has PPE, the need to cleaning etc. as well as the need to protect patients.

- The impact on possible needs that may arise out of an increased need for hospitalisation due to Covid-19 must also be considered.
- For **companies**, it would be important to consider whether the supply of essential goods can continue without, for example, opening head offices and the likes, and to make submissions. to that effect. Also where goods are manufactured that are not necessarily deemed to be “essential”.
- In all instances, the impact of **social circumstances**, e.g. schools not fully reopening, must also be considered, as well as the requirement that **all work that CAN be rendered remotely, must be done so**. That would apply to both HCPs and company functions.
- The **requirements** on cleaning, daily screening of all staff are also quite onerous, contact via equipment and surfaces, preventing any bottlenecks at entrances, no. biometric systems, etc. also require considerations, e.g. can smaller practices, or practices in small rooms, comply? Or how would physical distancing work in a rehab setting, or a general ward?

Download the OVID-19 risk adjustment strategy document [here](#).

[Back to top](#)

SAMED submission on Annexure B of the Disaster Management Act

SAMED has made a submission on Annexure B to the general regulations issued under the Disaster Management Act, 2002, as amended.

[Click here](#) to view the submission

[Back to top](#)

COVID-19: Opportunity for local manufacture

MDMSA recently engaged in discussions with BSA (Business for South Africa), the DTIC, the African Union and the WHO. All of these agencies have expressed an interest in the local manufacture of COVID-19 related Health products. These products fit largely into three major categories:

1. Capex type products like Ventilators
2. PPE
3. Disinfectants

To take advantage of this opportunity, MDMSA has aligned their support for this initiative with these groupings and have assigned team lead to take on each area.

As an initial step, they ask that members share with the [MDMSA office](#) information on their capacity to manufacture COVID-19 products as well as their capacity to increase production in the short term. For more information contact Tandiwe on 060 885 5305.

[Back to top](#)

SAHPRA Medical Device Hotline

SAHPRA has launched a COVID-19 Medical Device Hotline to deal with COVID-19 related queries.



SAHPRA COVID-19 Medical Device Hotline

Commencing on Tuesday 14 April 2020,
The SAHPRA Medical Device Hotline will be active. Direct all COVID-Related queries relating to Medical Devices to the following Hotline numbers.

084 220 8037

072 993 2273

078 281 6334

Hours of Operation: (Excluding weekends and public holidays)

08:00 – 16:00



Download this notice, [here](#).

[Back to top](#)

Reopening the economy: Obstacles, opportunities and risks

Both South Africa and the world face an economic crash as a result of the COVID-19 pandemic. The downturn, which threatens to rival the Great Depression, results from the need to take extraordinary efforts to limit the contagion. Internationally, the result has been plummeting demand, especially in the global North, with falling export prices except for gold, as well as disrupted supply chains for most producers. In South Africa, the lockdown has brought a sharp decline in domestic production, combined with a rapid increase in joblessness, falling household and business incomes, and shrinking government revenues. TIPS has put together a brief that looks at the impacts of the pandemic on the global economy, and especially South Africa's main trading partners. It then analyses the blockages to reopening the economy, which in turn lays the basis for more effective and strategic measures.

To download the Trade and Industrial Policy Strategies (TIPS) Policy Brief, [click here](#).

[Back to top](#)

Locally made face-mask marketplace

Following President Cyril Ramaphosa's announcement that all passengers travelling on public transport will be required to wear a mask and that it is recommended that everyone else wear a non-medical mask outside their homes, it is imperative that there is a reliable, easily available source of locally made masks.

Now, there is a portal by the Department of Trade, Industry and Competition (DTIC) and The Manufacturing Circle which is hosted by ProudlySA. The site links corporate buyers with mask producers.

[Click here](#) to find out more.

[Back to top](#)

BSA Update: SA Receives significant PPE supply

South Africa has received a significant order of personal protective equipment (PPE), which includes 2 million surgical masks and 216 000 KN95 respirators. This critical stock is intended for the sole use of frontline doctors, nurses and community health care workers, to protect them in their fight against the COVID-19 pandemic

This order, which arrived on Thursday night, was further bolstered by 784 000 KN95 respirators

[Subscribe](#)[Past Issues](#)[Translate ▼](#)

strategy that serves both the public and private health care sectors. This is led by the National Department of Health (NDoH) and the National Treasury's Office of the Chief Procurement Officer, working in partnership with Business for South Africa (B4SA).

[Click here](#) for the full announcement from Business for SA

[Back to top](#)

The Solidarity Fund uniting South Africa against COVID-19

The Solidarity Fund provided more details on its purpose and mandate of mobilising and coordinating efforts and resources from all South Africans and the international community to assist most vulnerable South Africans to deal with the impact of Covid19 and the consequences of measures intended to slow its rate of infection. One of its key focus areas is a Health Response with direct support for the healthcare system, augmenting both the private and government healthcare sectors to ensure they have what they need, as well as enabling emergency supplies.

The Solidarity Fund has received R2,6bn in pledges from tens of thousands of South Africans and has disbursed more than R1bn in critical interventions, such as the procurement of protective equipment for frontline health workers and disbursement of food parcels, to help South Africa respond to the health and socio-economic impacts of the coronavirus.

"President Ramaphosa announced the establishment of the Fund on 23 March and we are pleased to report significant progress against our objectives," said Chair of the Solidarity Fund, Gloria Serobe. "What is astonishing is that around 1 000 businesses and more than 75 000 individuals have reached into their bank accounts to assist those most impacted by Covid-19. We thank each and every one of you."

Details on how to donate are available on the Fund's website www.solidarityfund.co.za

For more information email info@solidarityfund.co.za

For offers of supply of Medicines and Medical Devices send

to covid19supplies@businessresponsecovid19.co.za

If you are seeking PPE for your hospital, clinic, or NGO please email your request

to covid19requests@businessresponsecovid19.co.za

[Back to top](#)

COVID-19 RELATED PRODUCT REQUESTS

Request for infrared digital thermometers

If you are a supplier of infrared digital thermometers and currently have stock, please contact James Meakings on the details below. This device is required for screening staff.

Contact James Meakings, Azochem Laboratories Pty Ltd: 083 651 2320

or james.meakings@azochem.co.za

[Back to top](#)

COVID-19 EVENTS

BSA Risk Assessment Presentation

Business for SA has performed a comprehensive risk assessment of the significant strategic risks arising from the COVID-19 crisis. The risk assessment has gone beyond the conventional two-dimensional approach to depicting risk and has taken a four-dimensional view by including considerations of risk interconnectedness and velocity. This enables consideration of the contagion effect of risks and will assist to identify and highlight those risks which, when addressed, will have the greatest effect on mitigating the other risks. **To view the full document, [click here](#).**

Given the technical nature of the assessment set out in this report BSA would encourage the participation of the presentation sessions as per the slots below:

Tues, 05 May; 07:30 to 08:30am

Tues, 12 May; 07:30 to 08:30am

Wed, 06 May; 07:30 to 08:30am

Wed, 13 May; 07:30 to 08:30am

[Subscribe](#)[Past Issues](#)[Translate ▼](#)

To enrol for any of the above sessions please contact: Daniella de Gouveia: +27 66 307 0846 or Daniella.de.Gouveia@businessresponsecovid19.co.za

[Back to top](#)

COVID-19 DEVELOPMENTS

TRACKING THE PANDEMIC

Latest South African COVID-19 cases, according to <https://www.covid19sa.org/>:



Globally, confirmed coronavirus cases have topped three million, as hard-hit France and Spain were on Tuesday set to detail their exit strategies from lockdowns imposed to stem the spread of the deadly disease. More than 209,000 people have been killed around the world by Covid-19, a quarter of them in the US.

A new analysis of the coronavirus death toll across 14 countries found the official death tolls are likely massively undercounting the true scale of the pandemic. [The Financial Times](#) studied the number of deaths that occurred in week-long periods across 14 countries in March and April.

It then compared that figure to the average for the same period between 2015 and 2019, before the pandemic. It concluded that the difference between the two is a reasonable estimate of how many extra deaths the pandemic had caused. The FT found that the death toll calculated this way was more than 60% higher than adding up various countries' official death tolls.

SA LOCKDOWN

As of 1 May, a national curfew from 20:00 to 05:00 will be in place and it will be applicable to everyone except essential workers traveling to and from work. The country is expected to move from a Level 5 to a [Level 4 lockdown](#), allowing limited economic activity but keeping most existing measures in place. While restaurants will be closed for sit-down meals when the country moves to Level 4 next Friday, the movement of takeaway food will be allowed. While regulations regarding the details of the Level 4 rules will be published next Thursday, Dlamini-Zuma and Patel announced the broad outlines. The wearing of cloth face masks will be mandatory under Level 4. Hygiene and social distancing will remain of critical importance and there will be screening for Covid-19 symptoms in workplaces that reopen. Winter clothing and bedding, as well as heating products, will be available for purchase. Cargo for domestic and neighbouring countries and the transport of essential goods, as well as e-hailing and limited public transport will be allowed. This is subject to the current limitations on the number of passengers that can travel. Emergency repair work will be allowed, including plumbers, electricians, glaziers and roof repairs and locksmiths. The agriculture, forestry and fishing industries will also now be able to operate, including livestock and agriculture exports, essential harvesting and storage activities, essential fishing operations, flori-culture and forestry.

[Dr Max Price](#), the former vice-chancellor of the University of Cape Town has suggested what SA can expect going ahead: the easing of restrictions on movement and work from 1 May will likely rapidly increase the flow of infected individuals between middle-class areas, industrial clusters, and the dormitory cities surrounding them. The impossibility of social distancing in informal settlements, housing several million people, will likely lead to a rapid spread of Covid-19 in those areas.

We have no reason to think the rate of transmission would be any different from other countries once the lockdown is eased, and it may well be worse given the high rates of HIV and TB. We can only hope that the six-week delay in the exponential rise of cases will have been enough to increase testing and field hospital capacity, the supply of protective equipment and the inculcation of social distancing habits and lifestyle to hold the epidemic from its worst-case forecasts.

The [Human Sciences Research Council](#) researched the impact and awareness of the coronavirus among South Africans. Some of the findings are:

- The majority of people adhered to the regulations: the results show that 99% either left their homes for food, medicine and social grants or stayed home. Thirty percent (30%) had not left home since the start of lock down and 62% had left to get food and/or medicine.

[Subscribe](#)[Past Issues](#)[Translate ▼](#)

- homes. Fifteen percent (15%) had to use public transport to get to the shops.
- Risk perception: 1 in 2 people indicated a sense of security and so they perceived themselves to be at low risk, only 1 in 5 people believed that they are at high risk of infection
 - Access to food: Just under a quarter (24%) of residents had no money to buy food. More than half (55%) of informal settlement residents had no money for food. About two-thirds of residents from townships also had no money for food.
 - Access to chronic medication: Approximately 13.2% of the population indicated that their chronic medication was inaccessible during the lockdown. Approximately 13%-25% of those living in informal settlements, rural (traditional tribal areas) and farms indicated their chronic medications were not easily accessible.
 - Financial impact of the lock down: Between 45% and 63% of people reported that the lock down would make it difficult to pay bills, debts, earn income, feed their families and keep their jobs. Additionally, 26% of people reported that they had no money for food.

ECONOMICS, POLITICS, EDUCATION, ENVIRONMENT, SOCIAL

South Africa is counting on accessing R95 billion (\$5 billion) from the [International Monetary Fund, World Bank and New Development Bank](#) to help finance a R500 billion economic stimulus package. The money from the multilateral lenders is available only for Covid-19-related measures and the government would have to adhere to some broad agreements, including on what the funding may be used for and repayment terms, National Treasury director-general Dondo Mogajane said in an interview with broadcaster eNCA on Sunday. The agreements should not compromise the country's sovereignty, Mogajane said.

South African Tourism is [compiling a Tourism Recovery Plan](#) in a bid to limit the damage suffered by the industry due to the pandemic and lockdown. Feedback from the industry has been that it is [pinning its hopes on the domestic tourism](#) market to lead the way to recovery in a post coronavirus world. This is despite the anticipation that South Africans will be cash strapped. [Air Mauritius](#) went into voluntary administration on Wednesday, expecting not to be able to meet its financial obligations "in the foreseeable future". The "immediate threat" of the **liquidation of South African Airways** (SAA) has been averted, the Department of Public Enterprises (DPE) announced on Saturday. Employees of SAA have also been granted an extension of the deadline by which they have to sign a section 189 termination of employment agreement proposed by the state-owned airline's business rescue practitioners (BRPs). The new deadline is now 1 May. [Argentina has banned](#) all internal and international commercial flights until 1 September because of the deadly coronavirus outbreak.

[Environment ministers from 30 countries](#) are meeting in a two-day online conference in a bid to make progress on cutting greenhouse gas emissions. The gathering is called the "Petersberg Climate Dialogue". It will focus on how to organise a **"green" economic recovery** after the acute phase of the pandemic is over. The other aim is to forge international agreement on ambitious carbon cuts despite the postponement of the key conference COP26 - previously scheduled for Glasgow in November (now without a date).

Inyathelo The South African Institute for Advancement has set up a [portal to assist non-profit organisations](#) to access information on various topics related to the COVID-19 pandemic including food relief, funding opportunities, webinars, links to Government websites and tools and resources for working from home.

CLINICAL & SCIENCE NEWS

Recent in-hospital Covid-19 outbreaks highlight a disproportionate number of healthcare staff rendered ineffective by infection, including a handful of healthcare worker deaths. South Africa's Covid-19 Command is scrambling to secure stocks of [personal protective equipment](#) (PPE), for them in the midst of what is a global procurement war. Frightened nursing unions and doctor bodies have begun exerting their right to self-protection and seeking clarity on their legal rights in what will soon be an unprecedented 'all hands on deck,' highly abnormal practice environment. Health Minister Zweli Mkhize said his department is ensuring there is enough PPE for frontline health workers, but there have been [issues](#) - like those that emerged while Mkhize visited Eastern Cape hospitals last week.

[South African hospitals are currently not overwhelmed](#) by the Covid-19 pandemic, acting director-general of the Department of Health, Anban Pillay, said on Monday. According to the department's statistics, as at 25 April, **27 patients were on ventilators** – nine in the Western Cape, eight each in Gauteng and the Eastern Cape and two in KwaZulu-Natal. Mkhize said the current thinking on treating Covid-19 patients places "less rush to putting people on invasive ventilators".

President Cyril Ramaphosa praised Gauteng government and healthcare workers leading its response to the deadly pandemic, saying they have shown great dedication, commitment and sacrifice. Ramaphosa joined Premier David Makhura and Health MEC Bandile Masuku for a tour of three of the province's facilities on Friday, which included a field hospital set up at the Nasrec expo centre, a food bank and

[Subscribe](#)[Past Issues](#)[Translate ▼](#)

Copyright © 2020 SAMED, All rights reserved.
Telephone: 011 704 2440 - Email: info@samed.org.za - www.samed.org.za

Want to change how you receive these emails?
You can [update your preferences](#) or [unsubscribe from this list](#).

SAMED is the voice of the South African medical technology industry. The not-for-gain was formed in 1985 and aims to provide members with a collective, objective and credible platform to engage with stakeholders. SAMED's members include individual medical technology companies, associate members and associations.

Disclaimer: The information contained in the mailer is for general information purposes only. The information is provided by SAMED and whiles SAMED endeavours to ensure the information is current and correct, it makes no representations or warranties of any kind, express or implied, about the completeness, accuracy, reliability, suitability or availability with respect to the information, services, or related graphics contained in this mailer for any purpose. Any reliance the user places on such information is therefore strictly at the user's own risk. In no event will SAMED be liable for any loss or damage including without limitation, indirect or consequential loss or damage. or any loss or damage whatsoever arising from loss of data or profit arising out of or in connection with the contents or use of this mailer.