

✉ Share this with those who need to know



**COVID-19 news from SAMED, Government and Abroad.**

### **GUIDANCE NOTE FOR WORKPLACES IN THE EVENT OF IDENTIFICATION OF A COVID-19 POSITIVE EMPLOYEE**

This guidance note outlines some key aspects in relation to COVID-19 that need to be considered by the workplace health and safety regulator, employers and employees should a worker become diagnosed as COVID-19 disease. The following issues need to be addressed in dealing with the identification and management of a COVID-19 positive worker. These procedures must be read in conjunction with other relevant/updated guidelines or regulations from the National Department of Health and the Departments of Employment and Labour, Mineral Resources and Energy, and Public Service and Administration.

This guidance covers:

- Personal health procedures
- Public health communicable disease procedure
- Infection prevention and control procedures
- Workplace related occupational health and safety procedures
- Labour related procedures
- Incident reporting and engagement with relative Regulator
- Leave and work's compensation arrangements

Download the guidance note [here](#).

[Back to top](#)



### **REMINDER TO PARTICIPATE IN THE SAMED 'INDUSTRY SUSTAINABILITY IN THE FACE OF ECONOMIC CHALLENGES SURVEY'**

COVID-19 has impacted business in a significant way. SAMED is undertaking to better understand the impact it has had on the sustainability of the medtech sector considering the economic challenge companies have and will continue to face.

We hereby request that you participate in this important survey so that SAMED has the necessary data to understand the impact on jobs should members not be able to implement price increases due to increased cost impacts within the market.

SAMED will use the gathered information to open discussion with the private hospital groups and Funders outlining the concerns around the sustainability of the industry.

Please complete the survey [[click here](#)] by Wednesday 20<sup>th</sup> May 2020.

**resource for all COVID-19 related updates, regulations, notices and news.**

**All SAMED COVID-19 updates and related information can be found here.**

**CLICK HERE**



### FROM THE DESK OF THE PRESIDENT

We often take our healthy and robust democracy for granted. Yet it is probably our greatest asset in our momentous struggle to overcome the coronavirus pandemic. We have among the most politically-engaged citizenry in the world. A poll in 2018 by the Pew Research Center shows South Africans are strongly inclined to take political action about issues they feel most strongly about, such as health care, education, freedom of speech and corruption.

The poll confirms much that we already know about ourselves. We enjoy nothing more than robust engagement with our government and among ourselves on the burning issues of the day. We have an active civil society ever ready to safeguard our fundamental freedoms and rights. One of the triumphs of our democracy is that every South African believes the Constitution protects them and that the courts are a fair and impartial arbiter of their interests.

We have checks and balances in place to ensure that every aspect of governance is able to withstand constitutional scrutiny. Where we are found wanting, we will be held to account by our courts and, above all, by our citizens. Besides our courts, our Chapter 9 institutions exist to advance the rights of citizens, as do the bodies tasked with oversight over the law enforcement agencies.

As I told the journalist, every South African has a right to approach the courts and even I, as President, could never stand in the way of anybody exercising that right. There has been and will continue to be, a robust and strident critique of a number of aspects of our national response to coronavirus, from the data modelling and projections to the economic effects of the lockdown, to the regulations. As government we have neither called for such critique to be tempered or for it to be silenced.

To the contrary, criticism, where it is constructive, helps us to adapt and to move with agility in response to changing circumstances and conditions. It enriches public debate and gives us all a broader understanding of the issues at play.

We have consistently maintained that we rely on scientific, economic and empirical data when it comes to making decisions and formulating regulations around our coronavirus response. To the greatest extent possible under these challenging circumstances, we aim for consultation and engagement. We want all South Africans to be part of this national effort. The voices of ordinary citizens must continue to be heard at a time as critical as this.

As we navigate these turbulent waters, our Constitution is our most important guide and our most valued protection. Our robust democracy provides the strength and the resilience we need to overcome this deep crisis. Just as government appreciates that most court applicants are motivated by the common good, so too should we recognise that the decisions taken by government are made in good faith and are meant to advance, and not to harm, the interests of South Africans.

Our foremost priority remains to save lives. Our every decision is informed by the need to advance the rights to life and dignity as set out in our Constitution. We will continue to welcome different – even dissenting – viewpoints around our national coronavirus response. All viewpoints aid us and help us to work better and smarter.

The exercise of the fundamental freedoms of expression, association and speech is a barometer of the good health of our democracy. But much more than that, these rights are essential to the success of our national and collective struggle to overcome the coronavirus.

With best wishes,



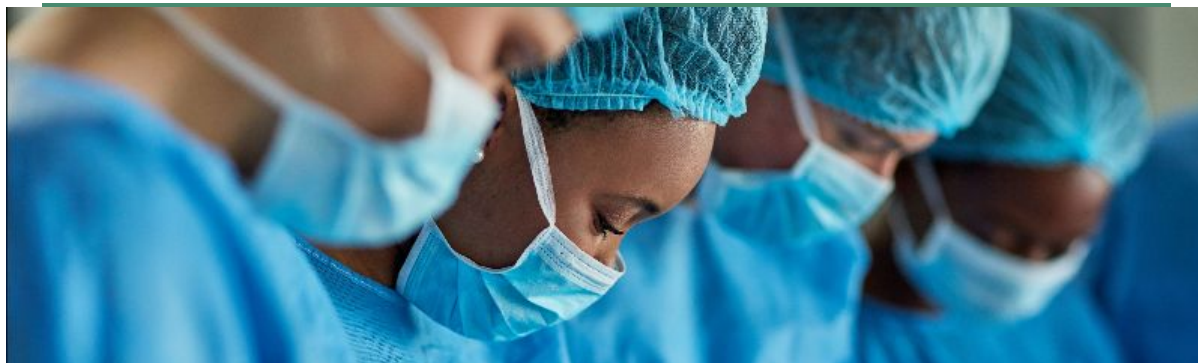
THE PRESIDENCY  
REPUBLIC OF SOUTH AFRICA

[Back to top](#)

## PERMIT TO TRAVEL TO ANOTHER PROVINCE, METROPOLITAN AREA OR DISTRICT FOR PURPOSES OF RELOCATION

Please see amended form one which is a permit for persons or businesses relocating. This permit and any form of identification must be in the possession of the person to whom this permit is issued.

Download the Form 1 Permit [here](#).

[Back to top](#)

## COMPARISON OF FFP2, KN95 & N95 FILTERING FACEPIECE RESPIRATOR CLASSES

Filtering facepiece respirators (FFR), which are sometimes called disposable respirators, are subject to various regulatory standards around the world. These standards specify certain required physical properties and performance characteristics in order for respirators to claim compliance with the particular standard.

During pandemic or emergency situations, health authorities often reference these standards when making respirator recommendations, stating, for example, that certain populations should use an "N95, FFP2, or equivalent" respirator. This document is only intended to help clarify some key similarities between such references, specifically to the following FFR performance standards.

Download the comparison [here](#).

[Back to top](#)

## RATIONAL USE OF PCR TESTING FOR COVID-19: GUIDANCE DOCUMENT

CMSA has released a guidance document of the rational use of PCR testing for COVID-19 informing the public health recommendations. The global standard for diagnosis is a positive PCR test for SARS-CoV-2 which confirms a diagnosis for the COVID-19 disease. NHLS is aiming to conduct 15 000 test daily, though it has not yet achieved this number on account of logistics issues and a lack of test reagent and viral extraction kits. PCR testing kits developed for the different testing platforms are in increasingly short supply globally which has implications for test kit availability in South Africa.

Guidance is required to limit PCR testing to:

1. reduce unnecessary testing to preserve test kits for those environments where it is needed most, and
2. to reduce the burden on laboratories to ensure more rapid turn around times to permit the implementation of effective test and trace measures

Download the guidance document [here](#).

[Back to top](#)

## DEADLINE 29 MAY 2020: APPLICATIONS FOR DEVELOPMENT OF LOCAL DIAGNOSTICS & REAGENTS FOR COVID-19

The South African Medical Research Council (SAMRC) has announced a funding opportunity aimed at supporting the development of a local capacity to supply reagents for existing gold standard COVID-19 testing as well as to offer rapid alternatives for the direct detection of the virus.

The SAMRC invites researchers from recognised South African public universities, science councils and

[Subscribe](#)[Past Issues](#)[Translate ▼](#)

The RFA is also open to not-for-profit and for-profit companies in South Africa who are involved in developing and manufacturing diagnostics and/or components. For more information and to download the relevant documents, [click here](#).

**Please direct queries or requests for information on this RFA to:**

Dr Michelle Mulder, Senior Program Manager: [michelle.mulder@mrc.ac.za](mailto:michelle.mulder@mrc.ac.za)

Application Closing Date: **29 May 2020**

**NEW! [Download the slides](#) from the overview session conducted today.**

[Back to top](#)

## **CALL TO SUBMIT : SOLUTIONS FOR THE NEXT HUMAN HIGH-IMPACT PANDEMIC**

Please note the call to submit research and innovation project proposals aiming to provide solutions and preparedness for highly contagious human infectious disease pandemics which inflict a high impact on society.

**Submit an online application by clicking [here](#).**

For more information and queries contact Mr Toto Matshediso on 012 843 6339 or

[Toto.matshediso@dst.gov.za](mailto:Toto.matshediso@dst.gov.za)

**Download the funding conditions and rules of South Africa [here](#).**

[Back to top](#)

## **W.H.O. COMMUNITY-BASED HEALTHCARE INCLUDING OUTREACH AND CAMPAIGNS, IN THE CONTEXT OF THE COVID-19 PANDEMIC**

Community-based health care includes services delivered by a broadly defined community health workforce, according to their training and capacity, encompassing a range of health workers, lay and professional, formal and informal, paid and unpaid, as well as facility-based personnel who support and supervise them and provide outreach services and campaigns. Where applicable, specific occupational groups and their roles are highlighted.

In every community, there are local actors, relationships and processes that intersect with the health sector and are central to delivering high-quality, people-centred health care and to building health system resilience. Relevant actors include local authorities, faith leaders and nongovernmental organizations (NGOs) and community groups, such as women's, scouting and youth groups. As trusted members of the community, the community health workforce.

**Download the full communication [here](#).**

[Back to top](#)



## **DHL AVAILABLE FREIGHT FLIGHTS**

DHL is very proud to be supporting the LSHC community in South Africa. **Download their weekly *UBUNTUCONNECT* service from China to Africa, [here](#).** Due to the high and ongoing demand, we have extended our weekly flight departures until 02-June.

To serve their clients better and operate from a more central area in China, they have **shifted the departure Airport from Guangzhou (CAN) to Shanghai (PVG)** for the flight departures on 26 May & 2 June.

The schedule includes:

- **UBUNTUCONNECT Schedule:** Departure time from PVG airport and connecting flight for possible destinations in week 21 and 22.



[Subscribe](#)[Past Issues](#)[Translate ▼](#)

contacts for PVG gateway team.

- **Booking Sheet:** A control sheet for all confirmed bookings with details such as supplier, HAWB, shipper etc. allowing us to track and plan our flight's accordingly during daily capacity planning calls.

This service brings in much-needed capacity from China via DXB, allowing us to service 3 different destinations each week, depending on demand.

The direct destination station we are able to offer on EK are **ACC, JNB, LOS, NBO** and most recently **DSS**. Contact the following for further details on available capacity, rates and re-forwarding options.

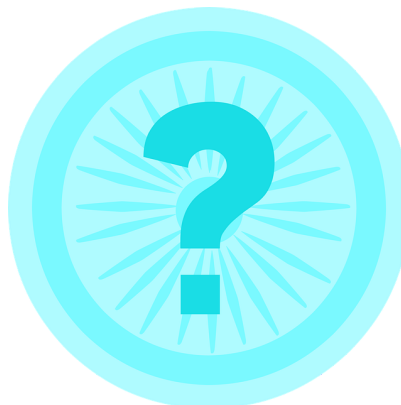
- **Ghana** - Cephas Bruce [Cephas.Bruce@dhl.com](mailto:Cephas.Bruce@dhl.com); CACC GH Team [cacc\\_gh@dhl.com](mailto:cacc_gh@dhl.com)
- **South Africa** - Mike Wood [m.wood@dhl.com](mailto:m.wood@dhl.com)
- **Nigeria** - Akinola Adebayo [Akinola.Adebayo@dhl.com](mailto:Akinola.Adebayo@dhl.com); CACC\_NG [cacc\\_ng@dhl.com](mailto:cacc_ng@dhl.com)
- **Kenya** - Purity Mutuku [purity.mutuku@dhl.com](mailto:purity.mutuku@dhl.com); CACC\_KE [cacc\\_ke@dhl.com](mailto:cacc_ke@dhl.com)
- **Senegal** - Pape DIABEL DIOUF [diabel.diouf@dhl.com](mailto:diabel.diouf@dhl.com); CACC\_SN [cacc\\_sn@dhl.com](mailto:cacc_sn@dhl.com)

For more information contact Mike Wood on 082 939 1768 or [m.wood@dhl.com](mailto:m.wood@dhl.com)

[Back to top](#)

DO YOU HAVE A  
COVID-19  
QUESTION OR  
QUERY?

Please visit the [FAQ Section](#) of our library as it provides answers to many of the frequently asked questions we receive.



### What must I do to prepare my workplace and have staff return to work?

There are now Occupational Health & Safety Measures that all businesses, apart from health facilities and practices, must adhere to. This applies to those who have been supplying essential goods this far, as well as those that may partially re-open from level 4 and down.

Download the directive [here](#)

You can also find useful tools on the [Return2Work website](#).

### Where can I get a list of goods that are banned from export by the government?

The restrictions on Personal Protective Equipment are set out in the published [Export Regulations](#).

The regulation provides that items listed in schedules 1,2,3 and 4 shall not be exported from the Republic of South Africa except by virtue of an export permit issued in terms of Section 6 of the said International Trade Administration Act,2002.



**IMPORTANT SAHPRA MEDICAL DEVICE NOTICES**

[Subscribe](#)[Past Issues](#)[Translate ▼](#)

- [Specification criteria for COVID-19 serological test kits](#)
- [Joint Communication-Regulatory Status of Equipment Used to Help Prevent COVID-19](#)
- [NRCS media Release – Standards for Masks and Disinfectants](#)
- [Regulatory Requirements for the manufacture, distribution or wholesale of Serological COVID-19 Rapid Test Kits](#)
- [SAHPRA clarifies the issue of COVID-19 Rapid Test Kits](#)
- [Medical devices including IVDS requirement for supply in light of COVID-19 pandemic](#)

[Back to top](#)

## SAHPRA MEDICAL DEVICE CONTACTS

SAHPRA has launched a COVID-19 Medical Device Hotline to deal with COVID-19 related queries.

- 084 220 8037
- 072 993 2273
- 078 281 6334

For queries on COVID-19 please email [mdcovid@sahpra.org.za](mailto:mdcovid@sahpra.org.za) and all other regular medical device queries can be sent to [MDnotifications@sahpra.org.za](mailto:MDnotifications@sahpra.org.za)

For general licensing queries: June Searela [june.searela@sahpra.org.za](mailto:june.searela@sahpra.org.za) / 072 828 2416

For COVID-19 related applications: Matlapeng Shabalala [Matlapeng.Shabalala@sahpra.org.za](mailto:Matlapeng.Shabalala@sahpra.org.za) / 071 302 0409 or

Khanyisile Nkuku [Khanyisile.Nkuku@sahpra.org.za](mailto:Khanyisile.Nkuku@sahpra.org.za) / 081 854 7109

[Back to top](#)

## PARTICIPATE ON BSA COVID-19 PORTAL

This effort is part of the broader SAMED collaboration with the Minister of Health via Business Unity South Africa's "Business for South Africa" initiative (BSA). During the current pandemic, up-to-date information is critical to ensure all key stakeholders in the value chain make the best-informed decisions at the right time.

The information collected on the [covid19manager.co.za](https://covid19manager.co.za) platform will be used to ensure supplier verification, regulatory compliance, product availability, reasonable pricing and providing the accurate and most up-to-date logistical information to the procurement department division at BSA to place orders from you and/or assist with ramping up local production. It is an automated process to help facilitate the overwhelming demand currently being experienced in South Africa during the weeks to come. The SAMED office, IDC, the dti, Minister of Health and the BSA procurement team will have access to the data. No data will be shared with other suppliers.

**NOTE: THIS IS A LIVE SYSTEM SO PLEASE UPDATE YOUR STOCK QUANTITIES AND LEAD TIME AS AND WHEN THEY CHANGE.**

[Subscribe](#)[Past Issues](#)[Translate ▼](#)

You will most likely be contacted by a member of the BSA procurement team should your information provided need to be verified or an order need to be placed. In this regard, we have put in place a security measure. The BSA procurement team will always supply you with your security code that only you have access to on the portal. See the video for reference as to where to find this code. Please never share or read this code to anyone but only have them read it back to you for validation. If at any point you feel your security code is compromised please let Tanya Vogt ([tanya@samed.org.za](mailto:tanya@samed.org.za)) know and it will be reset.

We are extremely appreciative of the support and commitment of our members in fighting this pandemic.

[Back to top](#)

## THE SOLIDARITY FUND

The Solidarity Fund provided more details on its purpose and mandate of mobilising and coordinating efforts and resources from all South Africans and the international community to assist most vulnerable South Africans to deal with the impact of Covid19 and the consequences of measures intended to slow its rate of infection. One of its key focus areas is a Health Response with direct support for the healthcare system, augmenting both the private and government healthcare sectors to ensure they have what they need, as well as enabling emergency supplies.

**Details on how to donate are available on the Fund's website [www.solidarityfund.co.za](http://www.solidarityfund.co.za)**

**For more information email [info@solidarityfund.co.za](mailto:info@solidarityfund.co.za)**

**For offers of supply of Medicines and Medical Devices send**

**to [covid19supplies@businessresponsecovid19.co.za](mailto:covid19supplies@businessresponsecovid19.co.za)**

**If you are seeking PPE for your hospital, clinic, or NGO please email your request**

**to [covid19requests@businessresponsecovid19.co.za](mailto:covid19requests@businessresponsecovid19.co.za)**

[Back to top](#)

## COVID-19 EVENTS

### SA CLINICAL TRIALS OVERVIEW DURING COVID-19

The keynote speaker, Professor Salim Abdool Karim will provide an overview of the current COVID-19 situation in South Africa, including updates and suggestions for tackling the pandemic.

**Date & Time:** 20 May 2020, 11:30 - 14:00

**For more information, [click here](#).**

**To register, [click here](#).**

### EKA SNAP SESSIONS: COVID-19 & MEDICAL SCHEMES and COVID-19 & PRIVACY

Elsabe Klinck and Associates has scheduled two more evening snap sessions.

- **COVID-19 & medical schemes: 20 May 18:00; and**
- **COVID-19 & privacy: 28 May**

**Download the form [here](#).**

[Back to top](#)

## COVID-19 WORKPLACE RESPONSE TRAINING:

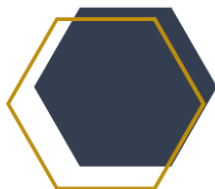
### Occupational Safety & Health COVID-19 Training

AUDA-NEPAD in partnership with the African Union, Department of Health South Africa, The International Labour Organisation (ILO) and partners will be hosting a series of COVID-19 Workplace Response Training on Occupational Safety and Health for all sectors.



**Training 1: 18 May  
10h30 -12h30  
(GMT+2)**

Setting up coordination team and workstreams



**Training 2: 20 May  
10h30 -12h30  
(GMT+2)**

Epidemiology and management of COVID-19 in the workplace



**Training 3: 22 May  
13h30 -15h00  
(GMT+2)**

Return to work post COVID-19 illness & lock-down



**Training 4: 25 May  
10h30 -12h30  
(GMT+2)**

Implications of COVID-19 in the workplace: OSH Context

**Download the Training Flyer with registration links [here](#).**

[Back to top](#)

## THE 2ND ARROW RESILIENCE WORKSHOP

[Subscribe](#)[Past Issues](#)[Translate ▼](#)

and highly energising. Dr Granger believes in the psychology of movement, whether it be changing an emotional or physical state or shifting thinking, all these methods move the needle and create momentum for business improvement - even in a crisis.

**Download the workshop overview [here](#).**

**View Dr Alex Granger's profile [here](#).**

[Back to top](#)

### OMMIA HEALTH COVID-19 VIRTUAL EXPO

With COVID-19 impacting almost every aspect of day-to-day life, it may not be 'business as usual'. But at this critical time if you would like to feel connected with the healthcare community across the world (despite social distancing) and stay up-to-speed on the latest developments within the global healthcare industry...join us for this **free-to-attend virtual expo** – [Omnia Health Live](#)

Omnia Health Live are bringing together the global healthcare industry, for the largest virtual gathering ever seen before, a whole new concept planned from the ground up to be more diverse and accessible, **taking place 22-26 June 2020.**



Don't miss out on this exciting opportunity to network with a plethora of solution providers, continue your learning initiatives, and connect with the world-wide healthcare community at large – all from just a keystroke. Yes, it's that simple.

**Ready to be part of this exhilarating new journey? [Join the experience here](#)**

[Back to top](#)

*Copyright © 2020 SAMED, All rights reserved.*

Telephone: 011 704 2440 - Email: [info@samed.org.za](mailto:info@samed.org.za) - [www.samed.org.za](http://www.samed.org.za)

Want to change how you receive these emails?

You can [update your preferences](#) or [unsubscribe from this list](#).

SAMED is the voice of the South African medical technology industry. The not-for-profit was formed in 1985 and aims to provide members with a collective, objective and credible platform to engage with stakeholders. SAMED's members include individual medical technology companies, associate members and associations.

Disclaimer: The information contained in the mailer is for general information purposes only. The information is provided by SAMED and while SAMED endeavours to ensure the information is current and correct, it makes no representations or warranties of any kind, express or implied, about the completeness, accuracy, reliability, suitability or availability with respect to the information, services, or related graphics contained in this mailer for any purpose. Any reliance the user places on such information is therefore strictly at the user's own risk. In no event will SAMED be liable for any loss or damage including without limitation, indirect or consequential loss or damage, or any loss or damage whatsoever arising from loss of data or profit arising out of or in connection with the contents or use of this mailer.