

✉ Share this with those who need to know



COVID-19 news from SAMED, Government and Abroad.



BUSINESS FOR SA | COVID-19

BUSINESS FOR SA: GUIDANCE NOTE FOR ALERT LEVEL 2

Introduction

- On 18 August 2020, South Africa moved to Alert Level (AL) 2 of the national state of disaster under [amended regulations](#) promulgated in terms of the Disaster Management Act 57 of 2002 (the AL2 Regulations).
- AL2 sees a further reopening of the economy, minimal restrictions on the movement of persons and a focus on compliance with health protocols. The shift from AL3 to AL2 comes in the wake of evidence of decreased rates of COVID-19 infections and increased recovery rates. These factors, President Cyril Ramaphosa noted in his [address](#) on 15 August 2020, have significantly reduced pressure on South Africa's health facilities.
- Because the amended regulations pertaining to AL3 already provided for significant economic reopening, the regulation of AL2 is much the same as AL3, with a few notable exceptions. This note details those amendments.

Excluded business operations

- Under AL2 all businesses may operate, with the exception of night clubs and international passenger air or sea travel for leisure purposes. This includes fitness centres, all accommodation establishments and tour operators, subject to limitations on the numbers of people who may be present in the relevant premises.
- International sporting events remain prohibited and no spectators are permitted at any sporting event, but non-professional sporting events are now permitted. The dispensing and transportation of alcohol is now permitted without restrictions, and the sale of liquor is permitted for off-site consumption between 09.00 and 17.00 on Mondays to Thursdays, excluding public holidays, and for on-site consumption at any time that the premises is permitted to be open. The provisions regulating the operation of the economic sector remain in place as they were under AL3, and all persons who are able to work from home must continue to do so.
- Workplace plans must remain in place and compliance officers must continue to oversee the implementation of these plans and to monitor strict adherence to hygiene and health protocols for those employees who are permitted under those plans to work from their places of business.

Movement of persons and gatherings

- Inter-provincial travel is now permitted for all purposes, but international travel remains limited to exceptions at the discretion of the Minister of Home Affairs and primarily for the purposes of repatriation.
- The AL2 Regulations retain the daily curfew between 22h00 and 04h00. Any employees required to work during those hours should be provided with a Form 2 permit, which is the standard form work permit under the Regulations to be issued by the head of the institution or his / her delegate. Movement is also permitted within the hours of curfew to attend to a medical or security emergency. However, failure to adhere to the curfew is no longer an offence under the AL2 Regulations.
- The restrictions on carrying capacity for long-distance public transport under the amended AL3 Regulations remain in place and carrying beyond that capacity remains an offence under the AL2 Regulations.

the gathering to disperse and may arrest or detain the persons gathering only if such order is disregarded.



Evictions

- For the duration of the state of disaster, no-one may be evicted from his or her land or home or have their residence demolished without a court order, and that court order may be stayed until after the national state of disaster unless the court thinks it would not be just and equitable to do so. In other words, the presumption under the state of disaster is that an eviction will not be just and equitable, but a court may determine it to be otherwise if, for example, the prejudice in delaying the execution of the order outweighs the prejudice that will be caused by evicting the person. In coming to its decision regarding the equity of an eviction, a court may require a report from the executive about emergency accommodation for the person to be evicted.
- The AL2 Regulations also provide that certain conduct in the context of landlord-tenant relationships arising from rental housing agreements is now presumed to be unfair. This includes termination of services where the landlord fails to attempt to reach an agreement on alternative payment agreements, penalties for late payment of rental where the default results from the national state of disaster and “[a]ny other conduct prejudicing the ongoing occupancy of a place of residence, prejudicing the health of any person or prejudicing the ability of any person to comply with the applicable restrictions on movement that is unreasonable or oppressive having regard to the prevailing circumstances.” It remains to be seen how the Rental Housing Tribunal will enforce these provisions, and what will be considered to be unreasonable or oppressive in this context.

Conclusion

- With the economy substantially reopened, it is incumbent on businesses to cooperate fully with health and safety protocols to protect their employees and to help to curb a resurgence of COVID-19 infections. All persons who have been successfully working from home since the national state of disaster was implemented five months ago should continue to do so, and personal contact should continue to be avoided unless absolutely necessary.

[Back to top](#)

[Subscribe](#)[Past Issues](#)[Translate ▼](#)[Back to top](#)

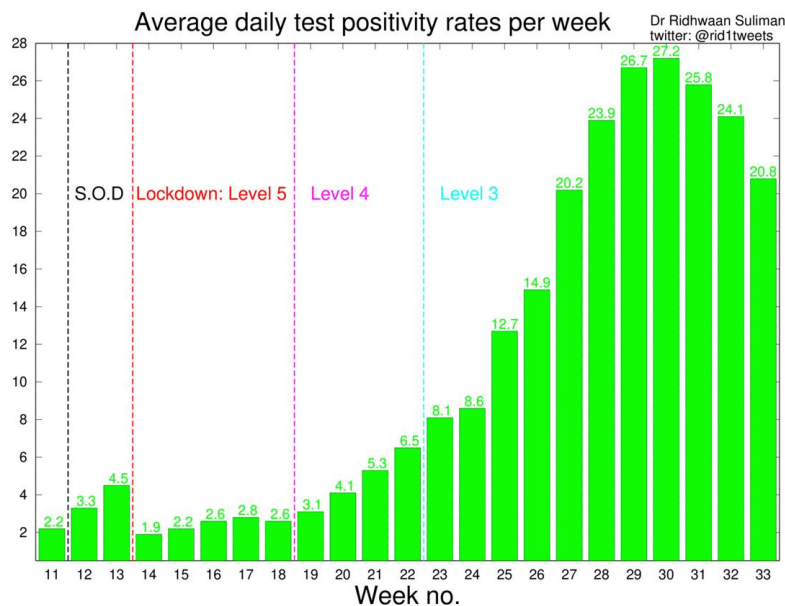
COVID-19 DEVELOPMENTS

TRACKING THE PANDEMIC

[Subscribe](#)[Past Issues](#)[Translate ▼](#)

592,144	2,238	Fatalities	2.07%	400,400
Active Cases	Relative to Population	12,264	Relative to Population	Total Tests
94,412	1.0075%		0.020866%	3,430,347

Gauteng	Western Cape	KwaZulu Natal	Free State	Eastern Cape	Limpopo	Mpumalanga	North West	Northern Cape
200,949	102,739	106,565	32,593	84,144	11,813	21,717	23,445	8,129
Daily Increase								
712	130	528	289	52	56	243	140	108



Testing for Covid-19 has declined from 45,000 a day to about 20,000 a day in South Africa. However, as shown by the chart above, the **test positivity rate** has dropped from 27% to 20% in a matter of weeks. This rate measures new cases as a percentage of new tests. The World Health Organisation says a rate below 10% is safe. (Chart: Dr Ridhwaan Suliman.)

Source: [Daily Maverick](#)

The WHO says that the [coronavirus spread was being driven by younger people](#) in their 20s, 30s, and 40s, many of whom were unaware they were infected, posing a danger to vulnerable groups. WHO officials said this month the proportion of younger people among those infected had risen globally, putting at risk vulnerable sectors of the population worldwide, including the elderly and sick people in densely populated areas with weak health services.

CLINICAL, SCIENCE

[The WHO wrote to every country on Tuesday urging them to quickly join its global shared vaccine programme](#) - and spelt out who would get its eventual coronavirus jabs first. The World Health Organization's director-general Tedros Adhanom Ghebreyesus said that without vaccinating the planet's highest-risk populations simultaneously, it would be impossible to rebuild the global economy. The most exposed 20% of each country's population - including front-line health workers, adults over 65 and those with pre-existing conditions - would be targeted in the first wave of vaccinations, once the WHO-led COVAX shared facility can roll out a proven safe and effective vaccine. [Business Day reports that the SA government has expressed interest](#) in participating in the Covax financing initiative for COVID-19 vaccines.

US drug developer Novavax Inc is starting a mid-stage study of its [experimental COVID-19 vaccine in South Africa](#). The Phase 2b trial study of NVX-CoV2373 will be conducted on about 2,665 healthy adults and will evaluate the safety and immunogenicity in about 240 medically stable, HIV-positive adults.

[Subscribe](#)[Past Issues](#)[Translate ▼](#)

they are or how long the protection lasts. "Herd immunity isn't a solution we should be looking to for salvation." A safe and effective vaccine still won't work in everyone who gets it, so vaccination coverage shouldn't be conflated with immunity, WHO said.

ECONOMY, POLITICS, ENVIRONMENT, SOCIETY

Daily Maverick's Ed Stoddard reports that the first sign the [economy was recovering](#) from a colossal COVID contraction was in early July, ironically, when Eskom resumed load shedding. Other indicators, including intriguing ones based on big data, support this scenario. Rising power demand was partly related to the fact that it was winter but also stemmed from increased economic activity. Lombard Odier, a private Swiss bank, using its proprietary process and models of big data, said that as of 9 August, South Africa had recovered 77% of its pre-COVID-19 economic activity, compared to the 2017-19 average. "We watch eight high-frequency signals: import and exports, city congestion levels, mobility data, retail and grocery consumption, workplace presence and air pollution levels for production. Taken together, they can give us a picture of the state of an economy's recovery," Stéphane Monier, Lombard Odier's chief investment officer, said in a note.

[Maverick Citizen](#) criticises the Gauteng Premier David Makhura's COVID-19 Expenditure Disclosure Report released this week [note: the [GP website link for the report is broken](#)]. "(The report) is meant to be a clean-up act on transparency and accountability. But it's opaque, full of holes and raises more questions than it answers." It suggests there companies that appear to have been set up just in time to benefit from the COVID-19 procurement funds.

Many of the 358 listed vendors have no web profile or are listed to provide business services and goods unrelated to what they've been listed as having provided. There is no available information on many of the companies – from the basic information of addresses and phone numbers to details of registration, compliance certifications, ownerships and directorships. Some of the companies have Facebook pages as their business pages, and some of them made their first posts around the end of March, when the first lockdown came into place. Despite this, many of the companies were given contracts worth considerable sums. Companies named in the Daily Maverick article are: Dinaane Consulting Services, Shwabada Holdings, HSB Mercantile Investments, Ikusasa Telecoms, Olee Telecom Solution, Maponya Medical Solutions, Royal Bhaca Projects, Crème de la Crème Media Agency, Gentagystix, XploreIT, TSA Africa Catering.

Public Protector Busisiwe Mkhwebane is this week embarking on a [full-scale inspection at health facilities in Gauteng](#) to observe how they are coping during the COVID-19 pandemic. This as the Office of the Public Protector continues with its fact-finding mission about the state of the country's health facilities. During the tour, Mkhwebane will assess whether hospitals are properly capacitated for the treatment of COVID-19 patients.

[Back to top](#)

Copyright © 2020 SAMED. All rights reserved.

Telephone: 011 704 2440 - Email: info@samed.org.za - www.samed.org.za

Want to change how you receive these emails?

You can [update your preferences](#) or [unsubscribe from this list](#).

SAMED is the voice of the South African medical technology industry. The not-for-gain-association was formed in 1985 and aims to provide members with a collective, objective and credible platform to engage with stakeholders. SAMED's members include individual medical technology companies, associate members and associations.

Disclaimer: This e-mail may contain confidential information and may be legally privileged and is intended only for the person to whom it is addressed. If you are not the intended recipient, you are notified that you may not use, distribute or copy this document in any manner whatsoever. Kindly notify the sender immediately and delete the e-mail. The information contained in this mailer is for general information purposes only.

The information is provided by SAMED and whilst SAMED endeavours to ensure that the information is current and correct, it makes no representations or warranties of any kind, express or implied, about the completeness, accuracy, reliability, suitability or availability of the information, including graphics, and offerings (collectively referred to as 'information') contained in this mailer for any purpose. Any reliance placed by the user on such information is therefore strictly at the user's own risk. SAMED will not be liable for any loss or damages of whatsoever nature, including without limitation, any direct, indirect, general, special, punitive, incidental or consequential damages, loss of use, loss of data, loss caused by a virus, loss of income or profit, loss of or damage to property and the like, claims of third parties or other losses of any kind or character, arising from or in connection with this mailer and/or accessing any information through links included in or files attached to the mailer.